

LANIER

**LD190/LD1110/
LD1135**

DIGITAL IMAGING SYSTEM



High-speed performance, incredible reliability

Three powerful high-volume systems specifically designed to handle demanding workloads in production environments



Productivity you can count on

Fast, efficient document workflow is the everyday reality delivered by Lanier LD190/LD1110/LD1135 Multifunction Systems. With their superior dependability and production-level print speeds—up to 135 ppm—these cost-effective systems can move your organization to new levels of productivity and effectiveness.

Get it done faster

Lanier LD190/LD1110/LD1135 systems, with their perfect blend of advanced technology, exceptional reliability and extensive finishing options, can handle volumes of work with ease.

- **Finish Your Projects Faster.** With a maximum speed of 135 pages per minute, the Lanier LD1135 is the fastest MFP Lanier has ever developed, allowing you to produce more high-volume and rush projects in-house. Much of this amazing leap in performance can be attributed to a unique new feeding system that all but eliminates the gaps between sheets.
- **Boost Productivity.** The Fiery EB-135 Print Controller can keep pace with even the fastest production environments and even extends your printing capabilities with exceptional PostScript™ processing capabilities.
- **Accelerate Last-Minute Edits.** Now you can edit your work right at the system, quickly and easily, in a variety of ways. For example, you can mix one- and two-sided originals, work in Bates numbering and adjust for page creep, which is extremely useful when printing booklets.
- **Automate Your Workflow.** Lanier provides a robust array of versatile finishing options designed to meet your capabilities now, and grow as your needs grow.
- **Copy at a Fast Pace.** Copy at high resolutions and fast production speeds with a limitless paper supply and have access to all the standard and optional functions you need to get desired results.





The LD190/LD1110/LD1135 is able to incorporate today's most advanced technologies, yet still remain simple and easy to use.

*Scan document
via Document
Feeder*

*View on your
computer screen
or send to others*



Not just speed, reliable speed

A high-volume MFP is a special class of digital output systems. Because the volumes it must produce are so great, it must operate without interruption. That's why Lanier LD190/LD1110/LD1135 systems have been engineered from top to bottom to ensure reliability.

- **Maximum Uptime.** New reliability-enhancing features include a Multi-Feed Detection System that automatically removes double feeds, ensuring seamless production.
- **Minimal Mistakes.** Job Preview allows you to see your entire job on the LCD screen right at the MFP, simplifying the process for walk-up users. Preview your scanned documents in full color, quickly set-up your security requirements and much more.

Every device should be this easy to operate

Incorporating today's most advanced technologies, Lanier LD190/LD1110/LD1135 systems are simpler and easier than ever to operate. The result is a surprisingly approachable system designed to respond quickly to your requirements and reduce time spent at the machine.

- **Out of Sight, But Not Out of Mind.** Lanier's standard WebImageMonitor lets you check toner and paper levels, change print queues, merge jobs, receive e-mail error notifications and otherwise check up on the various device functions. And @Remote Intelligent Remote Management System automatically reports usage meter data, freeing up staff time for more essential tasks.



*Preview thumbnails
on screen before
you send by e-mail*

- Advanced Job Management. Lanier's PrintStation 0135R MicroPress connectivity further simplifies your life by improving make-ready capabilities, automating and enhancing workflow management. It gives you the flexibility and control you need to optimize speed and efficiency while minimizing downtime.

Guarding Your Security

At Lanier, we understand your concerns about document security, too. So we've incorporated a wide range of protective measures into the Lanier LD190/LD1110/LD1135 systems to ensure your complete peace of mind.



DataOverwriteSecurity System (DOSS) automatically overwrites "latent information" (the digital traces of your data) on the hard drive after every copy, print and scan job. This is the same technology the National Security Agency uses to protect information on its digital hard drives. In addition, new network/user authentication provides full control and management across your entire organization.



A wide range of finishing and output options allow you to produce professionally finished documents.



To cut costs and save time, Lanier's unique Book Fold function, when combined with the BK5010 Booklet Maker, allows you to create professional booklets in-house.

Your Environmental Partner



Lanier continues its long-standing commitment to developing office solutions with environmentally friendly and superior energy- and supply-saving features, without compromising productivity.

LD190/LD1110/LD1135

GBC Strepunch III

On-line punch unit with customer replaceable die sets that's now fully integrated with the MFP. Activate from either the Touch Panel Display or straight from the Print Driver.

CI5000 Cover Interposer

The Interposer makes it easy to insert color pre-printed documents into your jobs. Each of the Interposer's two sources boasts a 200-sheet capacity with a maximum paper size up to 13" x 18".

Color Touch Panel Display

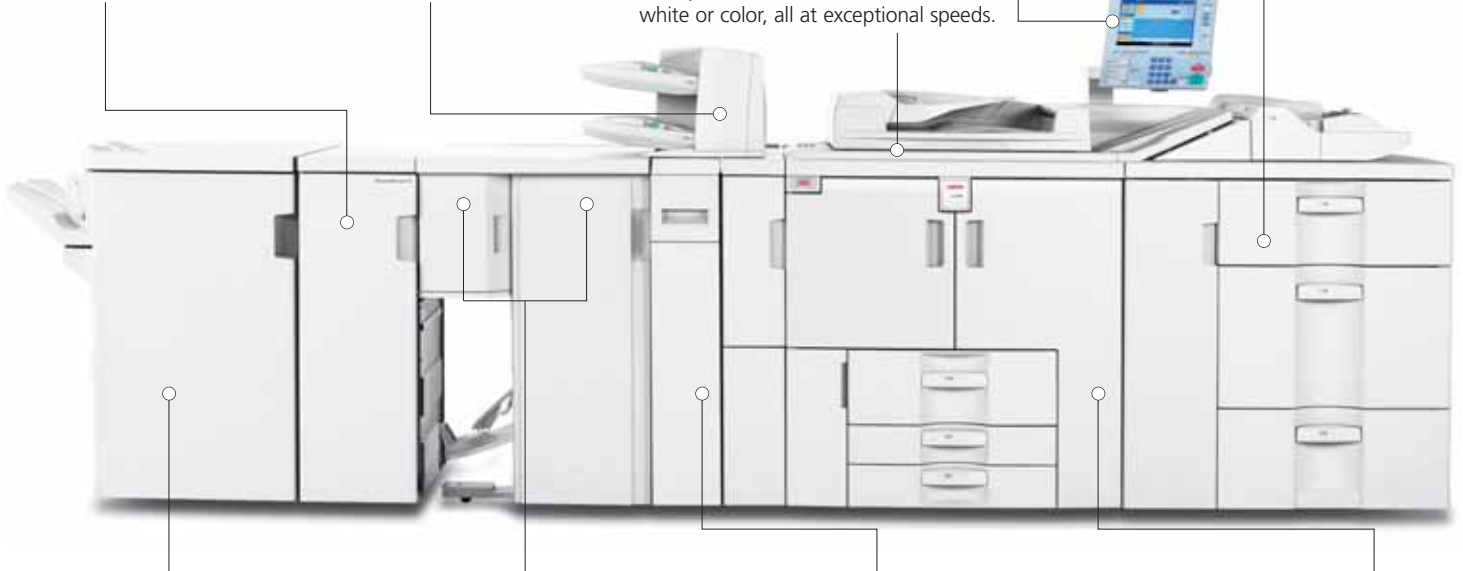
A new easy-to-use Color Touch Panel Display helps you program jobs quickly, especially for walk-up users.

High-Speed Color Scanner

Scan your documents in black and white or color, all at exceptional speeds.

New RT5010 DLT/LCT Large Capacity Tray

Provides a choice of Large Capacity Trays for feeding all types and sizes of documents, including up to 13" x 18" sized paper. Universally designed paper trays support the same sizes and weights (16 lb. Bond – 80 lb. Cover) across the entire system.



SR5000 Finisher

Staples up to 100 sheets in multiple different positions and now supports finishing paper sizes up to 13" x 18".

BK5000 Saddle Stitch Unit

New finishing technology enables you to create saddle-stitched booklets up to 60 pages (15 sheets).

ZF4000 Z-Fold Unit

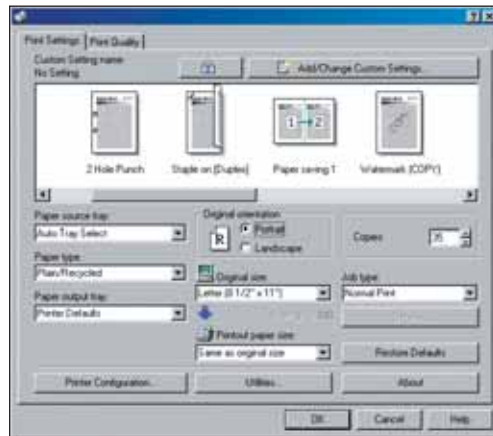
Integrated feature that provides the ability to have larger sheets of paper Z-folded online into your presentations. Engineering specifications and schematics are just some of the applications that are perfect for the new ZF4000.

Base System

90 pages per minute
110 pages per minute
135 pages per minute



With Lanier's new Trained Customer Replacement Unit (TCRU) design, a variety of components can be changed by trained operators, keeping production interruptions to a minimum and maximizing system uptime and availability.



Lanier's Refined Print Command Stream (RPCS) driver allows you to represent complex job functions in a single, simple icon-based format.

LANIER**LD190/LD1110/LD1135****SPECIFICATIONS****GENERAL SPECIFICATIONS**

Output Speed	Lanier LD190: 90-ppm Lanier LD1110: 110-ppm Lanier LD1135: 135-ppm
Warm-up Time	Less than 360 seconds
Standard Paper Weights	16 lb. – 40 lb. Bond 50 lb. – 80 lb. Cover 90 lb. – 110 lb. Index
Standard Paper Capacity	Tray 1: 1,000 sheets x 2 Tray 2: 500 sheets Tray 3: 500 sheets
Standard Paper Capacity	3,000 sheets
Power Source	208 – 240V, 50/60Hz, 20A (Requires Dedicated Outlet)
Power Consumption	Lanier LD190/LD1110: Less than 3,500W with LCT & Finisher Lanier LD1135: Less than 4,000W with LCT & Finisher
Dimensions (W x D x H)	34.3" x 33.9" x 58.2" (Main unit without a Finisher)
Weight	672.4 lbs. (Main unit without a Finisher)

SYSTEM SPECIFICATIONS

First Copy	Lanier LD190: 3.5 seconds Lanier LD1110: 3.2 seconds Lanier LD1135: 3.0 seconds
Copy Size	5.5" x 8.5" to 13" x 18"
HDD Capacity	160GB x 2 (320GB)
Reduction/Enlargement	25% – 400% in 1% increments

SYSTEM ACCESSORIES**Automatic Reversing Document Feeder**

Original Paper Weight	11 – 34 lb. Bond (Simplex) 14 – 28 lb. Bond (Duplex)
------------------------------	---

RT5000 LT/LCT Large Capacity Tray

Paper Sizes Supported	5.5" x 8.5" – 8.5" x 11"
Paper Capacity	Tray 4: 1,000 sheets Tray 5: 1,000 sheets Tray 6: 2,550 sheets

Paper Weights

Tray 4: 16 lb. Bond – 80 lb. Cover
Tray 5: 16 lb. Bond – 80 lb. Cover
Tray 6: 16 lb. Bond – 90 lb. Index

Dimensions (W x D x H)

21.2" x 28.7" x 38.5"

Weight

194 lbs.

RT5010 DLT/LCT Large Capacity Tray

Paper Sizes Supported	5.5" x 8.5" – 13" x 18"
Paper Capacity	Tray 4: 1,000 sheets Tray 5: 2,000 sheets Tray 6: 1,000 sheets

Paper Weights

Tray 4: 16 lb. Bond – 80 lb. Cover
Tray 5: 16 lb. Bond – 80 lb. Cover
Tray 6: 16 lb. Bond – 80 lb. Cover

Dimensions (W x D x H)

34.7" x 28.8" x 38.6"

Weight

194 lbs.

SR5000 100-Sheet Finisher

Proof Tray	500 sheets (8.5" x 11") 250 sheets (8.5" x 14" or larger) 16 lb. Bond – 80 lb. Cover
Paper Weight	3,000 sheets (8.5" x 11" – LEF)
Shift Tray	1,500 sheets (8.5" x 14" – 11" x 17" SEF) 1,000 sheets (12" x 18") 100 sheets (8.5" x 11")

Staple Capacity

100 sheets (8.5" x 11")

31.5" x 28.7" x 38.5"

Weight

165 lbs.

BK5000 Saddle Stitch Unit

8.5" x 11" – 12" x 18"

20 lb. – 24 lb. Bond

23.6" x 28.7" x 38.5"

Weight

154 lbs.

CI5000 Cover Interposer

5.5" x 8.5" – 13" x 18"

2 x 200 sheets

Paper Capacity	17 lb. Bond – 80 lb. Cover
Paper Weight	27.9" x 28.7" x 50"
Dimensions (W x D x H)	99.2 lbs.
Weight	
BY5000 Multi Bypass Tray

Paper Capacity	500 sheets (20 lb. Bond)
Paper Sizes Supported	5.5" x 8.5" – 12" x 18" (RT5000) 5.5" x 8.5" – 13" x 18" (RT5010)

PUS000 Punch Unit

2 or 3 holes (User Selectable)

16 lb. Bond – 90 lb. Index

Lanier LD190/LD1110 only

Systems Supported**GBC StreamPunch III**

Customer Replaceable Die Sets (7)

8.5" x 11" Long Edge Feed

(11" side only)

Lanier LD190/LD1110/LD1135

12" x 28.5" x 38.5"

Weight

154 lbs.

NETWORK CONNECTIVITY OPTIONS**Printer/Scanner Kit Type 1350****Windows Drivers**

RPCS 95/98/ME/NT4.0/2000/XP/Server 2003

PCL 5e 95/98/ME/NT4.0/2000/XP/Server 2003

PCL 6 95/98/ME/NT4.0/2000/XP/Server 2003

Adobe®PostScript®3™ (option) 95/98/ME/NT4.0/2000/XP/Server 2003

Utilities Supported

Web Image Monitor
Web SmartDeviceMonitor
SmartDeviceMonitor
Printer Utility for Mac
IEEE1394 Utility
USB Printing Support
PDF Direct Printing (through DeskTopBinder)
DeskTopBinder/DeskTopBinder Lite
ScanRouter/ScanRouter Lite
IEEE1284 Interface Type A
IEEE1394 Interface Type B
IEEE802.11b Wireless Interface Type H
Gigabit Ethernet Type 7300
Bluetooth Interface Unit Type 3245
Document Output Technologies (DOT)
RA2K Integration for IPDS
OMS400

Printer Options**Host Printing Options****Fiery EB-135 Print Controller**

Controller Type	External
Memory	512MB
Hard Disk Drive	80GB
PDL's Supported	Adobe®PostScript®3™, PCL5e/PCL6, PDF, TIFF
Utilities Supported	Command WorkStation v4.5 Fiery WebTools Fiery Scan Fiery FreeForm 2 Fiery Mail Port

SCANNER SPECIFICATIONS**Printer/Scanner Kit Type 1350**

Scan Speed	80 spm (black and white) 80 spm (color)
Optical Resolution	100/150/200/300/400/600 dpi
Resolution for Delivery Scanner	100/150/200/300/400/600 dpi
TWAIN Resolution	100 – 1200 dpi (color and black and white) TIFF/JPEG/PDF and High Compression PDF

File Formats**Scan-to-Email Requirement**

SMTP Gateway and TCP/IP

2,000 addresses

Max Address Per Send

500 addresses

Address Support Via LDAP

100 addresses

Scan-to-Folder Protocol Support

SMB/FTP/NCP

100/150/200/300/400/600 dpi

50 Client Folders

Max. Client Folders Per Send

Single Page TIFF/JPEG

Single Page PDF

Multi Page TIFF

Multi Page PDF

High Compression PDF

Security Authentication

Windows Authentication

LDAP Authentication

Basic Authentication

Secure Socket Layer Support

Network Protocol On/Off

SNMP v3 Support

PDF Encryption

Driver Encryption Key (PCL/RPCS Driver)

Copy Data Security System Type E

Data Overwrite Security Unit (DOSS) Type F

ADDITIONAL OPTIONS

BK5010 Production Booklet Maker

TR5010 Trimmer Unit

CF5010 Cover Feeder Unit

BF5010 Book Folder

PrintStation 0135R MicroPress Connectivity

www.lanier.com

Lanier Five Dedrick Place, West Caldwell, NJ 07006

©2007 Lanier is a registered trademark of Ricoh Americas Corporation. All rights reserved. Windows® and Windows® 95/98/ Me/NT4.0/2000/XP are registered trademarks of Microsoft Corporation. Macintosh®, Mac® OS and AppleTalk® are registered trademarks of Apple Computer, Inc. Adobe® and PostScript® are registered trademarks of Adobe Systems, Inc. RPCS™ is a trademark of Ricoh Company, Ltd. All other trademarks are the property of their respective owners. Print speed may be affected by network, application or PC performance. Specifications and external appearances are subject to change without notice. Products are shown with optional features.

Printed in U.S.A. on recycled paper.

