

LANIER

LMV310

WIDE FORMAT



Superior productivity in a small footprint

A compact and cost-effective digital wide format multifunction product that delivers exceptional image quality and fast performance



Wide format versatility for low volume users

The Lanier LW310 is a compact, "all-in-one"—copy, print and scan—wide format digital imaging system designed specifically for lower-volume users. It sets a new standard for small footprint, affordability, superior image quality and flexibility in a wide format system.

Architects, engineers, commercial and corporate workgroups, and government agencies that don't need large, high volume systems can now achieve unsurpassed productivity and flexibility with the Lanier LW310. It can fit the budget, the space and the performance needs of virtually any size architectural or engineering group.

The Lanier LW310 Does It All

The Lanier LW310 wide format digital system offers substantial advantages for wide format users in a variety of office environments, large or small.

- The Lanier LW310 is an excellent replacement for an aging analog copier. Less costly to maintain, the Lanier LW310 offers more of the performance features most valued by wide format users.
- The system is many times faster, more versatile and more economical than an ink jet plotter, and it adds the value of having both copying and scanning functions.
- The Lanier LW310 is cleaner and more versatile than the diazo process.
- The Lanier LW310 system is a more economical and a much more convenient alternative to outsourcing document reproduction to copy and print shops.
- The Lanier LW310 and its RW-240 Controller makes this an excellent workgroup printing system that can either replace or augment centrally located mid- to high-volume systems. By reducing the long walk time to pickup and retrieve documents, it improves workgroup efficiency.
- The Lanier LW310 operating panel is easy to read and operate. The panel's LED screen easily guides users through the control of even the most complex commands.





The Lanier LW310 is the affordable solution for low-volume wide format copying, printing and scanning.

The Lanier LW310 delivers top digital performance

As a Copier:

- The Lanier LW310 is easy to use and outperforms many larger wide format copier/printers.
- The Lanier LW310 delivers truly superior images. Its 600 dpi resolution produces sharp lines, details and fills. With its 256-grayscale levels, it keeps shading faithful. The Lanier LW310 also enables users to fine-tune copies. By selecting the nature of the original—Text/Photo, Photo, Drawing, or Special—the Lanier LW310 automatically adjusts image quality for each specific original type.
- The Lanier LW310 can be configured in several different ways. The basic Lanier LW310 configuration is an optional table that allows manual feeding of cut sheet paper. Or, it can be configured with an optional 500 foot paper roll tray table or a two-roll tray table, either of which can have an optional paper cassette tray added for automatic feeding of cut sheets up to 12" x 18". Changing paper rolls is simple and easy. The roll-changing system features lightweight flange inserts for no-hassle roll changes.
- The Lanier LW310 features two output trays. A space-saving upper output tray holds up to 25 sheets vertically at the top of the unit. An additional 20-sheet paper stacker tray drops copies out the back, down to the front and bottom of the unit.

As a Printer:

- Printing directly from a CAD workstation to the Lanier LW310 with the RW-240 Controller is fast and document production couldn't be easier. From the CAD workstation, more than two dozen tasks can be requested and managed, including multiple and collated sets, media selection, magnification, image rotation, border setting, account tracking, sample print and stamp printing. Now you can just click from your workstation and create multiple sets of copies quickly and efficiently. No more printing a single set on the pen plotter, then carrying the printed output to the copier to make multiple copies.

As a Scanner:

- The Lanier LW310 with the RW-240 Controller Scan option maintains drawings and plans in space-saving digital file format on hard drives, so users can burn to disk or archive. Newly produced documents no longer need to be stored in space-consuming filing drawers and cabinets. Existing documents can be scanned and saved, reducing the need for filing space and retaining deteriorating paper documents.
- With electronic storage, retrieval time for existing documents is shortened. Documents can be pulled up, examined on the RW-240 controller screen, edited, shared on a network or printed out. It's even possible to edit images, extracting and adding new elements as desired. PDF scans can be sent anywhere in the world via e-mail.

Important digital advantages wide format users demand

The outstanding digital capabilities of the Lanier LW310 enable users to benefit from many different timesaving, high-productivity features. A complete list is provided in the specifications; a representative few are:

- Collated Sets: The Lanier LW310 can copy or print complete collated document sets. Sequentially ordered sets can also be rotated and delivered to either output tray in perfect collated order.
- Several Reduction/Enlargement Choices: Reduce and enlarge documents using preset values, specified ratios, auto R/E, directional magnification, and zoom for engineering and architectural applications...in feet and inches OR metric units.
- Stamping: The Lanier LW310 offers optional stamping possibilities. Date, page number, and virtually any type of preset stored stamp can be placed anywhere on the page.
- Positive/negative reverse, job preset and features such as overlay, erase, margin adjustment, and double copy make the Lanier LW310 even more powerful and versatile.

Robust and Versatile Printing and Scanning with the RW-240 Controller

The RW-240 print controller and its PLOTBASE suite of software are essential options that transform the Lanier LW310 into a versatile, fully functional network printer to meet virtually every wide format printing need.

- The RW-240 controller's PLOTBASE server software acts as the system's print queue manager. It operates on either Windows 2000 Professional SP3 or Windows XP Professional SP1.
- The RW-240 controller's PLOTCLIENT software supports a wide variety of applications and functions at each client workstation, including:
 - PLOTCLIENT Win: for CAD users to create and send print jobs from their workstations.
 - WinPrint: print drivers for Windows 95/98, NT4.0 2000, ME and XP for printing from any Microsoft Windows application.
 - HDI/ADI: drivers for printing from AutoCAD 13/14, 2000/2000i, LT2000/LT2000i and 2004/2004LT.
 - PLOTCLIENT Web: for creating and sending print jobs via the intranet or Internet.

Today's technology-based environment demands electronic document storage to save precious space and eliminate retrieval delays and difficulties. The ability to scan originals improves document portability, security and ease of editing.

With the addition of the RW-240 SCANTOOL option, the Lanier LW310 can scan original documents for editing, revising, printing and digital storage. Scanning speed is up to 4 pages per minute with a resolution of 200 dpi. SCANTOOL scans documents to a variety of raster file formats including single and multi-page TIFFs and Adobe PDF files.



Access copy/print output easily from the top of the LW310.



Easy to change paper at three automatic feed sources.

Your Environmental Partner



Lanier continues its long-standing commitment to developing office solutions with environmentally friendly and superior energy- and supply-saving features, without compromising productivity.

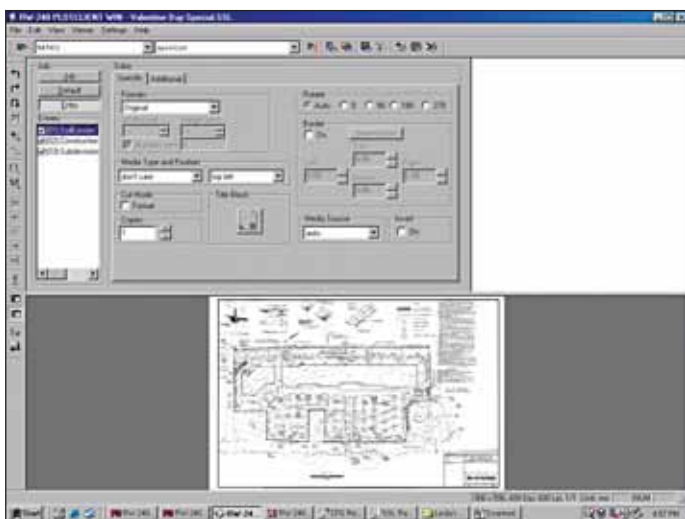
Easy Access
Clamshell Design

Easy To Replace
Toner Cartridge

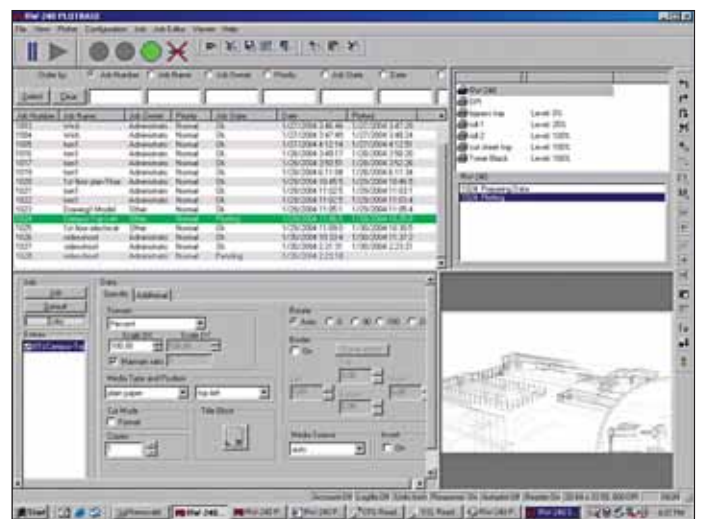
Roll Paper Tray

Manual Feed
Bypass Table

Universal Paper
Cassette Tray
Holds Up To 12" x 18"



PLOTCLIENT Win: Creates and sends print jobs to PLOTBASE



PLOTBASE: Manages the print queue



Client PC (Windows OS)
 RW-240 PLOTCLIENT
 RW-240 PLOTCLIENT WEB
 RW-240 WINPRINT



Client PC (AutoCAD drivers)
 RW-240 PLOTCLIENT
 HDI/ADI



Client PC (Bentley Systems Microstation driver)
 Available From Bentley Systems

Server PC (Windows 2000 or Windows XP)

RW-240 PLOTBASE
 RW-240 PLOTCLIENT WEB ADMIN
 RW-240 SCANTOOL



RW-240 Print Controller for fully functional network printing

SPECIFICATIONS

COPIER

Configuration Desktop
Paper Source Three optional tables (must choose one option from below):
 1. Manual Bypass Cut Sheet Feed Table
 2. One Roll Tray Table With Manual Bypass
 3. Two Roll Tray Table With Manual Bypass
Optional Paper Cassette Tray The one and two roll tray table options each permit the addition of the Paper Cassette Tray which automatically feeds up to 12" x 18" cut sheet paper
Warm-up Time Less than 2 minutes
First Copy 22 seconds (D size)
Copying Speed 4 cpm/ppm (D size); 2 cpm/ppm (E size)
Resolution 600 dpi x 600 dpi
Grayscale 256 levels
Grayscale Printing Reduction/Enlargement 2 levels
 16 presets: Zoom 25% to 200% in 0.1% increments; 200% to 400% in 0.2% increments
Multiple Copies 1 – 20
Cutting Method Synchronized cut, preset cut, variable cut
Memory Capacity 80 MB; optional hard drive: 10 GB
Original/Copy Size Maximum: 36" x 141"; Minimum: 8.5" x 5.5"; 36" x 78" bypass
Copy Exits Top tray, Standard; Rear/Bottom, with Optional Roll Feed Table
Original Exits Top; Rear Straight Path
Power Source 120V/60Hz; 15A
Dimensions (WxDxH) 42.5" x 25" x 23"
Weight 218 lbs. (Copier only)

COPIER OPTIONS

Cut Sheet Feed Table
 One Roll Paper Tray Table
 Two Roll Paper Tray Table
 Universal Paper Cassette (Only with 1 or 2 Roll Paper Tray Table)
 Hard Disk Drive (Required for Sorting, Stamping and Image Overlay)
 Stamp Board
 Roll Holders

PRINTER CONTROLLER RW-240 OPTION

PC Server Specifications
Controller Type External PC Server (Note: Server not included, must be purchased separately from an appropriate vendor)
PC System Requirements
Operating System Windows® 2000 Professional SP3 or Windows XP Professional SP1
Processor Pentium 4, 1GHz
PCI 2.0 or higher x 1 slot (with 3.3V or 5V auto adaptive)
System Memory At least 512 MB RAM for scanning or drawing to maximum size
Hard Drive At least 10 GB memory
Network Interface 10/100 Base T Ethernet, TCP/IP configuration
Monitor At least 1024 x 768 pixels resolution
Maximum Speed 4 ppm (D size), 2 ppm (E size)
Network Protocol TCP/IP, IPX/SPX, lpr/lpq, HTML, SMB
PC Interface Slot PCI 2.0 or higher x 1 slot (with 3.3V or 5V auto adaptive) Max. Load 5A
Print Controller Supported Output File Formats: HP-GL, HP-GL2, HP-RTL, TIFF, Calcomp 906/907, WMF, BMP, CALS, T6X, CIT, PCX PostScript 3 (for PDF printing and scanning), CGM (Computer Graphics Metafile)
Optional Redhat Linux 6.x-7.1; HP-UX 10.x/11.x; Sun Solaris 2.67.x/8.x; SCO Open Server 5.x (up to 5.06)
Unix Support Account Tracking, Auto Paper Select, Border Setting, Entry Collation, Help, Image Rotation, Limitless Paper Feed, Locked Print, Magnification, Media Selection, Mirror Image, Multiple Copy, Output Tray Select, Pen Settings/Stamping, Roll/Media Select, Sample Print, Status Monitor
Print Controller Features

SCANNING OPTION

Controller Type External PC Server (Same as for Print Controller)
Maximum Speed 4 ppm (D size)
Resolution 150 – 600 dpi (1200 dpi with enhancement)
Scan Size 8.26" x 7.16" to 35.98" x 236"
File Formats TIFF Single and Multi page (uncompressed/ G3/G4), T6X, BMP, RLC, HP-RTL, PCX, CALS 1&2, PDF (Single and Multi-Page).
Reading Area Setting Auto, Fixed, User Defined
Continuous Input Batch Scanning, Scan to File with Autaname, Save Multiple Page Document in One File (PDF or TIFF)
Scanning Modes Single Copy, Set Copy, Batch Scanning, Archiving, Integrated Editor
Scanner Software SCANTOOL
Controller Options RW-240 Controller
 Controller Interface PCB Type 240
 Scan Option
 PostScript 3 (Emulation)
 CGM (Computer Graphics Metafile)

